

**V50D back connection**



**V50B radial connection**



Suitable for use in plumbing, heating, pumping and industrial systems. Bourdon spring pressure gauges, back and radial connection.

**5W 5 way brass connectors**



Suitable for use in booster pressurization sets - packaged pressure units and systems

**VALCO RANGE PRESSURE GAUGES (MANOMETRES)**

Suitable for use in plumbing, heating, pumping and industrial systems. Bourdon spring pressure gauges, back and radial connection.

**Type**

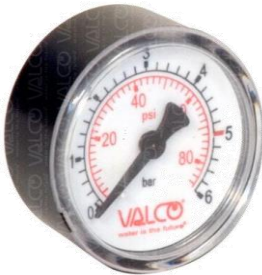
**V50D - V50B**

**Dimensions in mm**

Type	V50D	V50B
Thread	1/4" BSPT	
HEIGHT mm	44	28
DIAMETRE mm	52	52
RANGES (double scale bar - psi)	0 - 6 bar; 0 - 10 bar	

V50D back connection

V50B radial connection



**OPERATING CONDITIONS (LIMITS OF USE)**

Fluid working temperature °C	+ 10 / + 90
Max pressure admitted bar	Up to 3/4 of the full-scale value for static pressures. Up to 2/3 of the full-scale value for fluctuating pressures. Up to the full-scale for short periods

**CONSTRUCTION MATERIALS**

Body	Shock-proof ABS
Dial cover	High transparency technopolymer
Dial	White ABS
Bourdon spring	Copper alloy
Connector	Brass

Type

**5W: 5 way Brass Connector**

**Max. working pressure: 2400 kPa (24 bar)**



Dimensions in mm, threads in G inch		Function of the connections
L	52	
W	49	
H	91	
a	59	
b	28	
c	G 1" F	Delivery pipe connection
d	G 1" F	Flexible hose to tank connection
e	G 1" M	Pump delivery port connection
f	G 1/4" F	Manometre connection
g	G 1/4" M	Pressure switch connection

Not in scale

