

**VALCO RANGE PRESSURE GAUGES (MANOMETRES)**

Suitable for use in plumbing, heating, pumping and industrial systems. Bourdon spring pressure gauges, back and radial connection.

**Type**

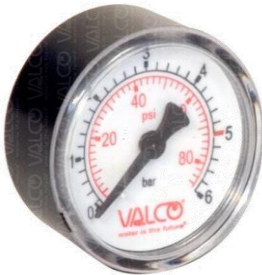
**V50D - V50B**

**Dimensions in mm**

Type	V50D	V50B
Thread	1/4" BSPT	
HEIGHT mm	44	28
DIAMETRE mm	52	52
RANGES (double scale bar - psi)	0 - 6 bar; 0 - 10 bar	

V50D back connection

V50B radial connection



**OPERATING CONDITIONS (LIMITS OF USE)**

Fluid working temperature °C	+ 10 / + 90
Max pressure admitted bar	Up to 3/4 of the full-scale value for static pressures. Up to 2/3 of the full-scale value for fluctuating pressures. Up to the full-scale for short periods

**CONSTRUCTION MATERIALS**

Body	Shock-proof ABS
Dial cover	High transparency technopolymer
Dial	White ABS
Bourdon spring	Copper alloy
Connector	Brass